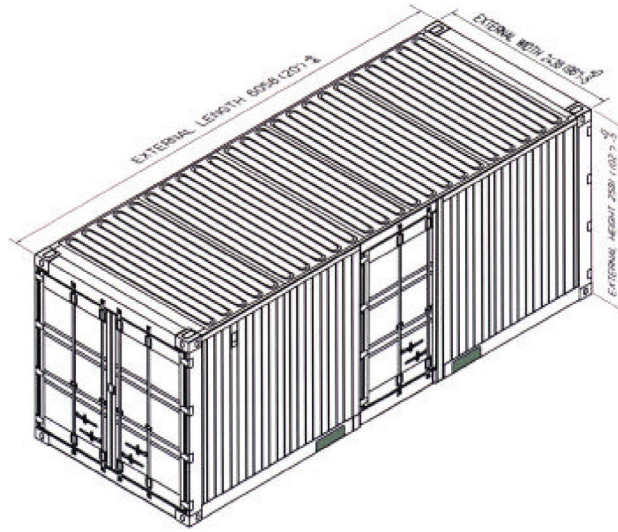




20' Maintenance Container

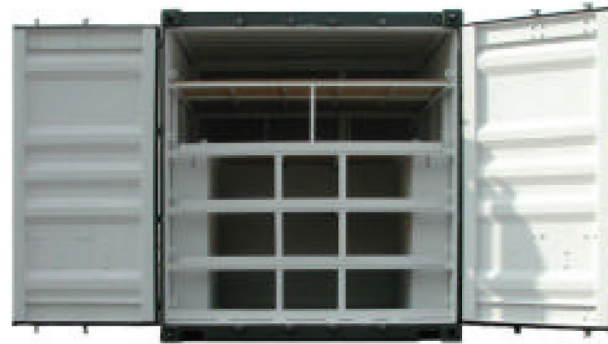
SB8641
20' Maintenance Container



PRODUCT FEATURES

STANDARD FEATURES

- Corrugated steel sides and roof
- 14 gauge locking steel double end swing doors on both ends and one single side door
- 1 1/8" thick marine plywood floors with 10 gauge steel floor overlay
- Tie down steel lashing rings, 4000 lbs. cap. each
- Two-way laden fork lift pockets
- (2) closing vents
- (1) vent, pressure relief valve
- Custom steel shelves with plywood surface
- Stainless steel chain bins
- Tool mounting system
- Work bench with storage cabinets



NSN # 8150-01-480-6877

	LENGTH		HEIGHT		WIDTH		DOOR OPENING		SIDE DOOR OPENING	
	Exterior	Interior	Exterior	Interior	Exterior	Interior	Height	Width	Height	Width
Ft in	19' 10 1/2"	19' 2 1/16"	8' 6"	7' 9 29/32"	8' 0"	7' 5 1/16"	7' 5 3/4"	7' 8 1/8"	7' 5 3/4"	3' 10 7/16"
Metric	6,058	5,844	2,591	2,385	2,438	2,264	2,280	2,340	2,280	2,350

	TARE WEIGHT	PAYLOAD	GROSS WEIGHT	CUBIC CAPACITY
Lbs	6,740	46,170	52,910	1,113 Cu. Ft.
Kgs	3,057	20,943	24,000	31.5 Cu. M.

ALL NEW CONTAINERS ARE MANUFACTURED TO THE LATEST ISO STANDARD

ALL DIMENSIONS AND WEIGHTS ARE NOMINAL AND SUBJECT TO MINOR VARIATIONS THAT MAY OCCUR DURING THE MANUFACTURING PROCESS

1 Sea Box Drive, East Riverton, NJ 08077-2022 | Phone: 856 . 303 . 1101 | Fax: 856 . 303 . 1501 | Email: sales@seabox.com

www.seabox.com | © Copyright 2020, Sea Box, Inc.

052621-R00

ISO 9001



CERTIFIED QUALITY
MANAGEMENT SYSTEM

GSA CONTRACT # GS-02F-0024P
Advantage!