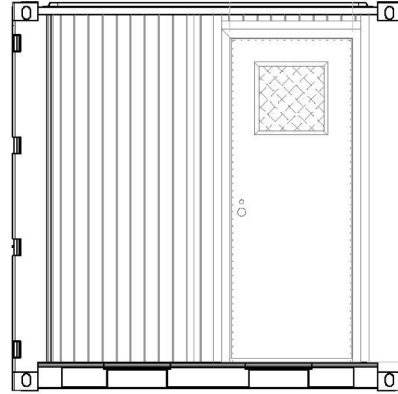
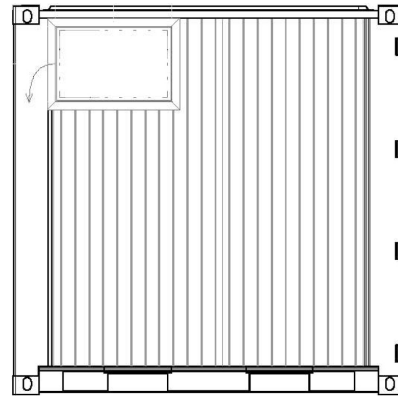




Tricon Insulated Shelter with Climate Control & Basic Electrical Package



SECTION A
EXTERIOR CURB SIDE ELEVATION VIEW



SECTION B
EXTERIOR ROAD SIDE ELEVATION VIEW

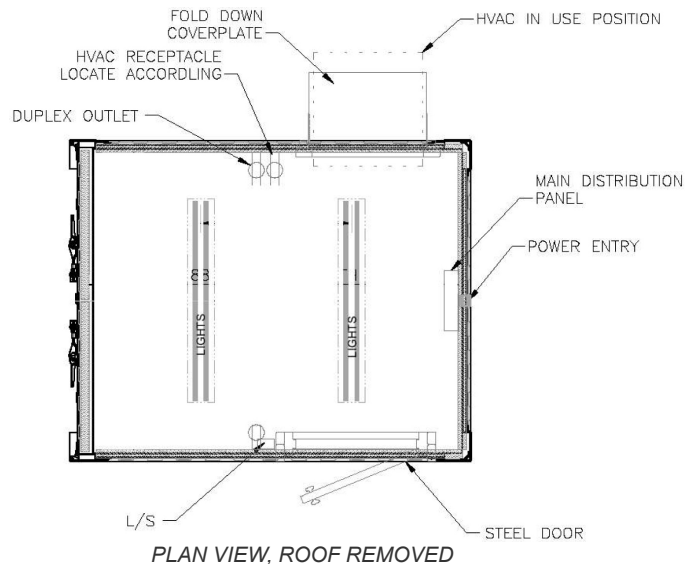
PRODUCT FEATURES

STANDARD FEATURES

- Corrugated steel sides, roof + swing doors on both sides
- Heavy duty steel floor
- (4) way fork lift pockets
- (1) 30" x 80" high steel personnel door with (1) 16" x 16" window
- (1) reinforced cutout frame for a window mount unit, (1) cover plate installed for overseas shipping
- 1 1/2" foam insulation and 3/8" plywood board with white textured lining
- (1) Grainger ES12 (part # 22XR65), 208 A/C volt, single phase, 12,000 BTU cooling, 8900 BTU heat or equiv.
- Electrical & Lighting package: light fixtures, circuit, switch, distribution panel, and receptacles
- Ext. Paint Color Choice of OD Green or Standard Tan

OPTIONAL FEATURES

- STANLEY VIDMAR cabinets, shelves, and desks



PLAN VIEW, ROOF REMOVED

SB3821-0.4-CPN
Tricon Insulated Shelter with Climate Control & Basic Electrical Package

020219-R00

ISO 9001



CERTIFIED QUALITY
MANAGEMENT SYSTEM

ALL NEW CONTAINERS ARE MANUFACTURED TO THE LATEST ISO STANDARD

ALL DIMENSIONS AND WEIGHTS ARE NOMINAL AND SUBJECT TO MINOR VARIATIONS THAT MAY OCCUR DURING THE MANUFACTURING PROCESS